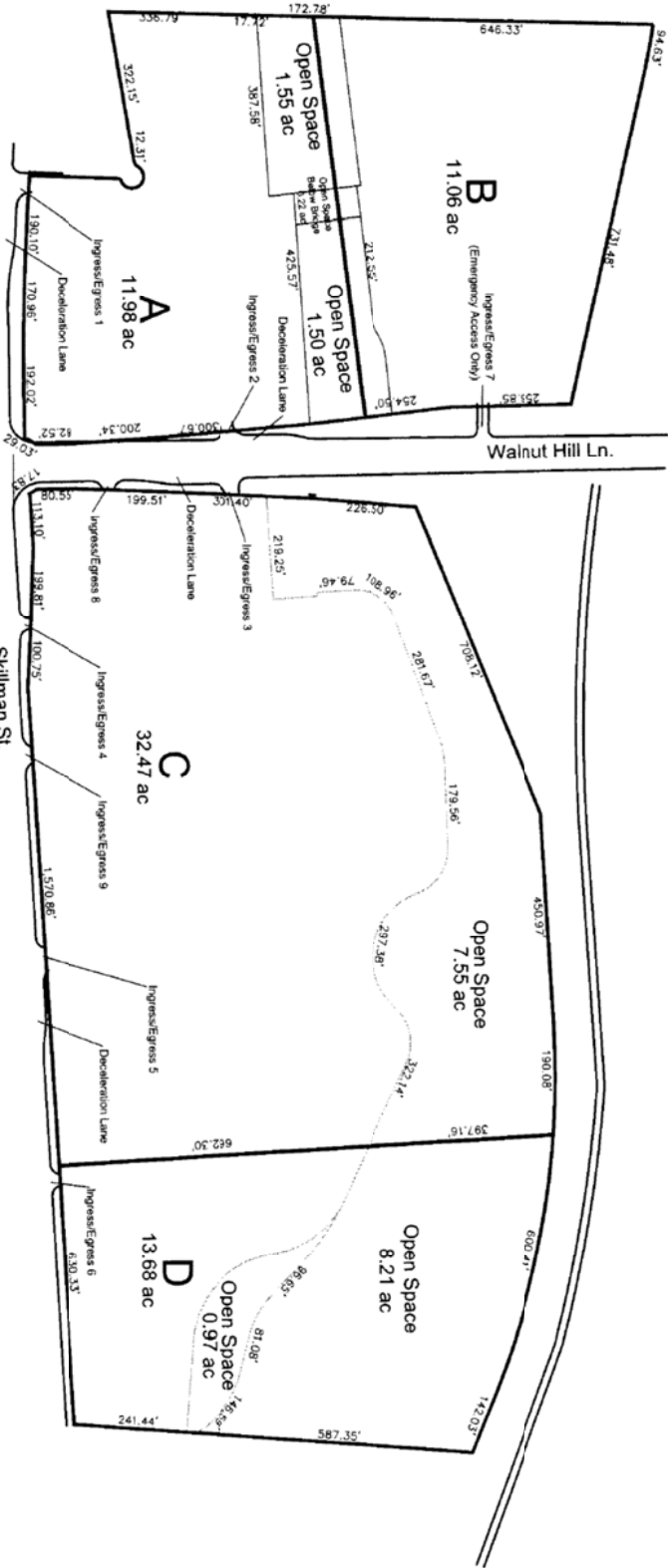


100912

Exhibit 758 A

27852



	Subarea A	Subarea B	Subarea C	Subarea D
Max Height	75'	108'	75'	75'
Max FAR	4.0	4.0	2.85	4.0
Max Lot Coverage	90%	90%	90%	90%
Min. Front Yard Setback	6'	6' (0' at Walnut Hill Ln)	6'	6'
Max Front Yard Setback (from minor public r.o.w.)	20'	20'	20'	20'
Min. Side and Rear Yard Setback	0'	0'	0'	0'
Max. Underfloor Area:				
Residential Units	280 Units	654 Units	900 Units	175 Units
Non Residential Floor Area	155,000 s.f.	35,000 s.f.	300,000 s.f.	0
Max. Stories	5	7	5	4

Planned Development District No. 758

Approved
City Plan Commission
March 4, 2010

ZONING CASE: 2089-262(RB)

CONCEPTUAL PLAN
LAKE HIGHLANDS TOWN GEN
PLANNED DEVELOPMENT DISTRICT NO. 758

Pacheco Koch Consulting Eng
PLANNED DEVELOPMENT DISTRICT NO. 758

DATE	BY	SCALE
02/25/2010	JK	AS SHOWN